



FINAL EXAM

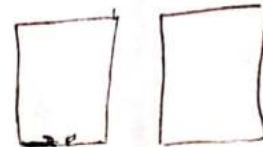
Student Name	[REDACTED]	Subject	Civil Engineering Drawing
Student ID	[REDACTED]	Code	EngC 212

Note : All dimensions in millimetre.
Do both the questions. Both the questions are of equal weightage.
Assume data suitably, if not given.
Only electronic calculator and drawing instruments are allowed.

2019
2

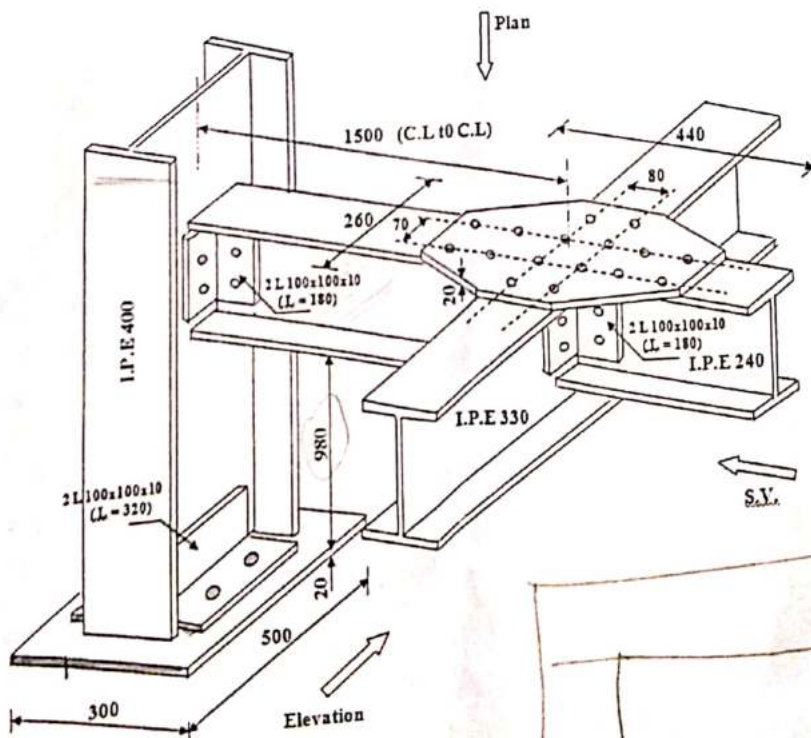
Q1: Draw with scale (1:10), Longitudinal and cross-section (at end and middle of beam) of beam with all details and dimensions.

- Width and depth of beams are 200 mm and 300 mm.
- Width of end support is 300 mm
- Middle support is 200 mm
- Clear span = 3.0 m Effective span = 3.20m
- Expansion joint = 10 mm
- End cover = 40 mm, Clear cover = 25mm
- Top reinforcement = main bar 2nosØ12mm
- Bottom reinforcement = main bar 4nosØ12mm,
- Two bent-up Anchor bars = 2nosØ10mm Stirrups Ø6 @300cm c/c



Q2: Draw with scale (1:10) for the isometric view shown,

(1) Plan (2) Elevation (3) Side view (All details and dimensions must be shown)



Section	H	b _f	t _w	t _r
I.P.E 400	400	180	10	15
I.P.E 330	330	160	8	12
I.P.E 240	240	120	6	10