

### Exercise 3

Draw the sketch of the model shown in Figure 2-58. The sketch to be drawn is shown in Figure 2-59. Do not dimension it. The solid model and dimensions are shown for your reference. (Expected time: 30 min)

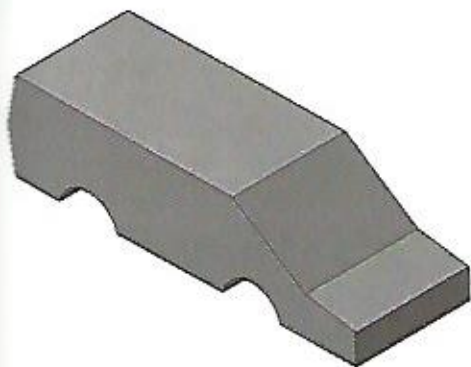


Figure 2-58 The solid model for Exercise 3

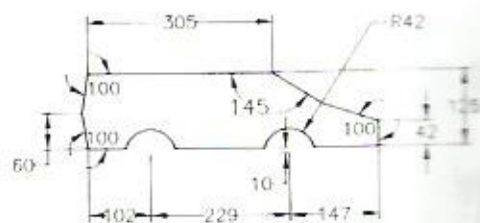


Figure 2-59 The sketch of the model

### Exercise 4

Draw the sketch of the model shown in Figure 2-60. The sketch to be drawn is shown in Figure 2-61. Do not dimension it. The solid model and dimensions are shown for your reference. (Expected time: 30 min)



Figure 2-60 The solid model for Exercise 4

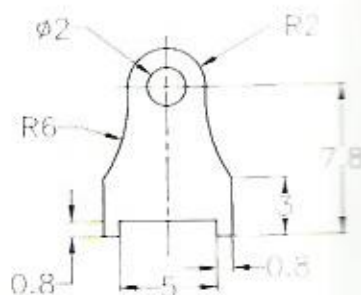


Figure 2-61 The sketch of the model

## Exercise 5

Draw the sketch of the model shown in Figure 2-62. The sketch to be drawn is shown in Figure 2-63. Do not dimension it. The solid model and dimensions are shown for your reference. **(Expected time: 15 min)**

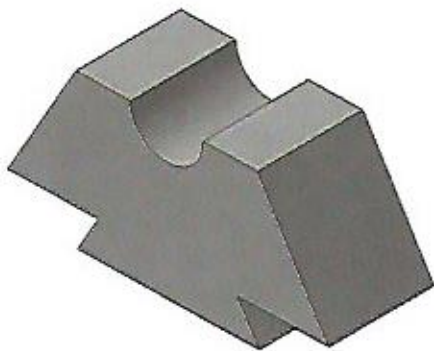


Figure 2-62 The solid model for Exercise 5

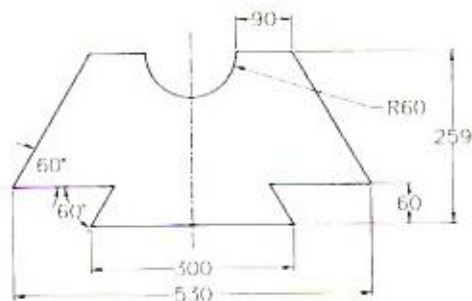


Figure 2-63 The sketch of the model

## Exercise 6

Draw the sketch of the model shown in Figure 2-64. The sketch to be drawn is shown in Figure 2-65. Do not dimension it. The solid model and dimensions are shown for your reference. **(Expected time: 30 min)**



Figure 2-64 The solid model for Exercise 6

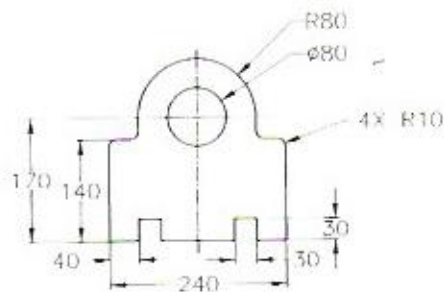


Figure 2-65 The sketch of the model

### Answers to Self-Evaluation Test

1. T, 2. T, 3. T, 4. F, 5. Construction/Standard Element, 6. Oriented Rectangle, 7. lines,
8. Profile, 9. Circle Using Coordinates, 10. inferencing lines

# EXERCISES

## Exercise 1

Draw the sketch of the model shown in Figure 3-63. The sketch to be drawn is shown in Figure 3-64. Do not dimension the sketch. The solid model and dimensions are given only for your reference.  
(Expected time: 30 min)



Figure 3-63 The model for Exercise 1

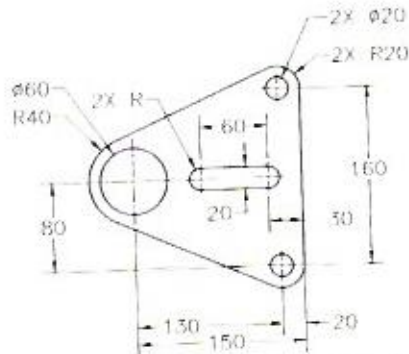


Figure 3-64 The sketch for Exercise 1